



GAT MONTHLY MEMBERSHIP PROGRESS REPORT

Results as of: 8/31/2023

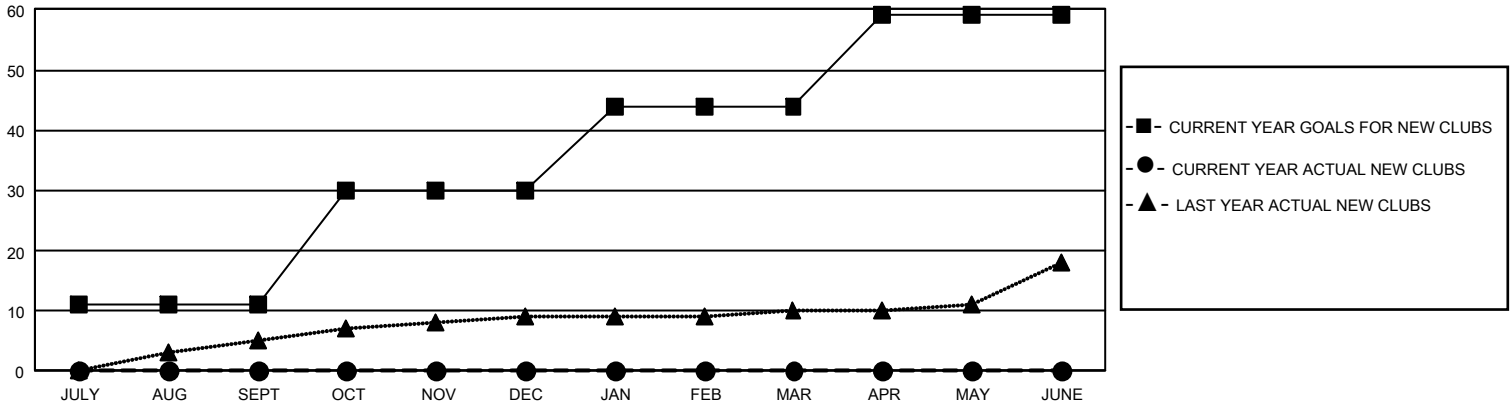
GMT Constitutional Area 1, Group H

REPORT DOES NOT INCLUDE CLUBS IN UNDISTRICTED AREAS.

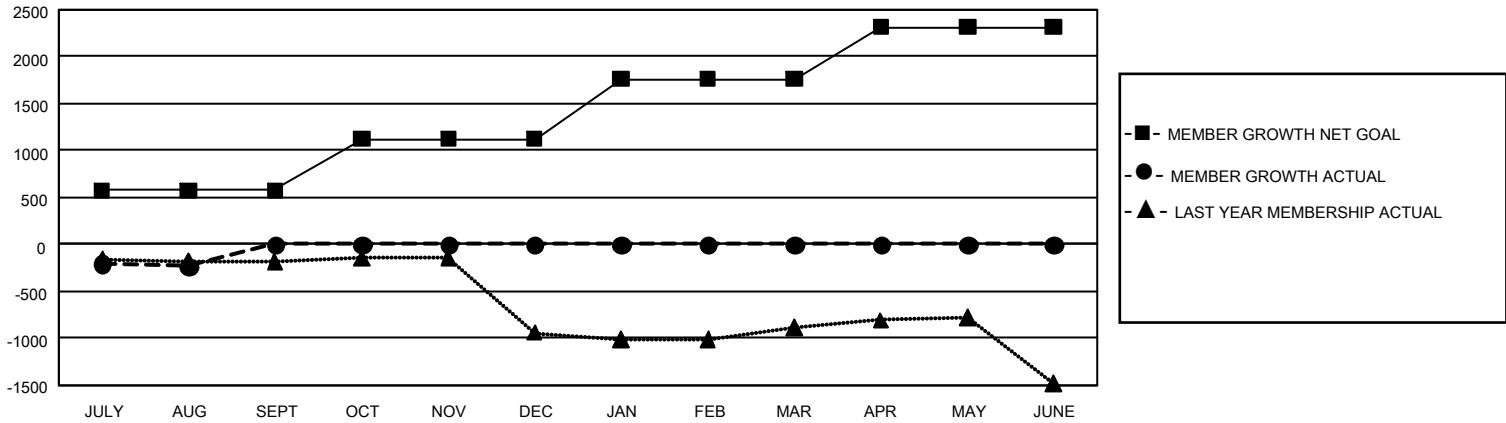
Clubs			
RESULTS FOR 2023-2024			
QUARTER	NEW CLUB GOAL	NEW CLUBS	DROPPED CLUBS
JULY/AUG/SEPT	33	0	12
OCT/NOV/DEC	57	0	0
JAN/FEB/MAR	42	0	0
APR/MAY/JUNE	45	0	0

Members			
RESULTS FOR 2023-2024			
QUARTER	MEMBER GROWTH NET GOAL	MEMBER GROWTH ACTUAL	DROPPED MEMBERS ACTUAL (including transfers)
JULY/AUG/SEPT	576	747	841
OCT/NOV/DEC	547	0	0
JAN/FEB/MAR	642	0	0
APR/MAY/JUNE	554	0	0

GOALS AND ACTUAL NEW CLUBS CUMULATIVE



GOALS AND ACTUAL MEMBERS CUMULATIVE



DROPPED CLUBS: 12	260 CLUBS OF 1,349 ADDED 1 OR MORE NEW MEMBERS	<u>GENDER DISTRIBUTION</u>	
		MALE	18,157 (57.97%)
<u>DROPPED MEMBERS</u>		FEMALE	13,160 (42.01%)
		NON BINARY	2 (0.01%)
DECEASED	82	PREFER NOT TO ANSWER	4 (0.01%)
CLUB CANCELLED	59	TOTAL FAMILY UNIT MEMBERS	5,935
OTHER	700	FAMILY MEMBERS PAYING HALF DUES	3,050
TOTAL	841		

[CLICK HERE FOR CUMULATIVE MEMBERSHIP DATA](#)